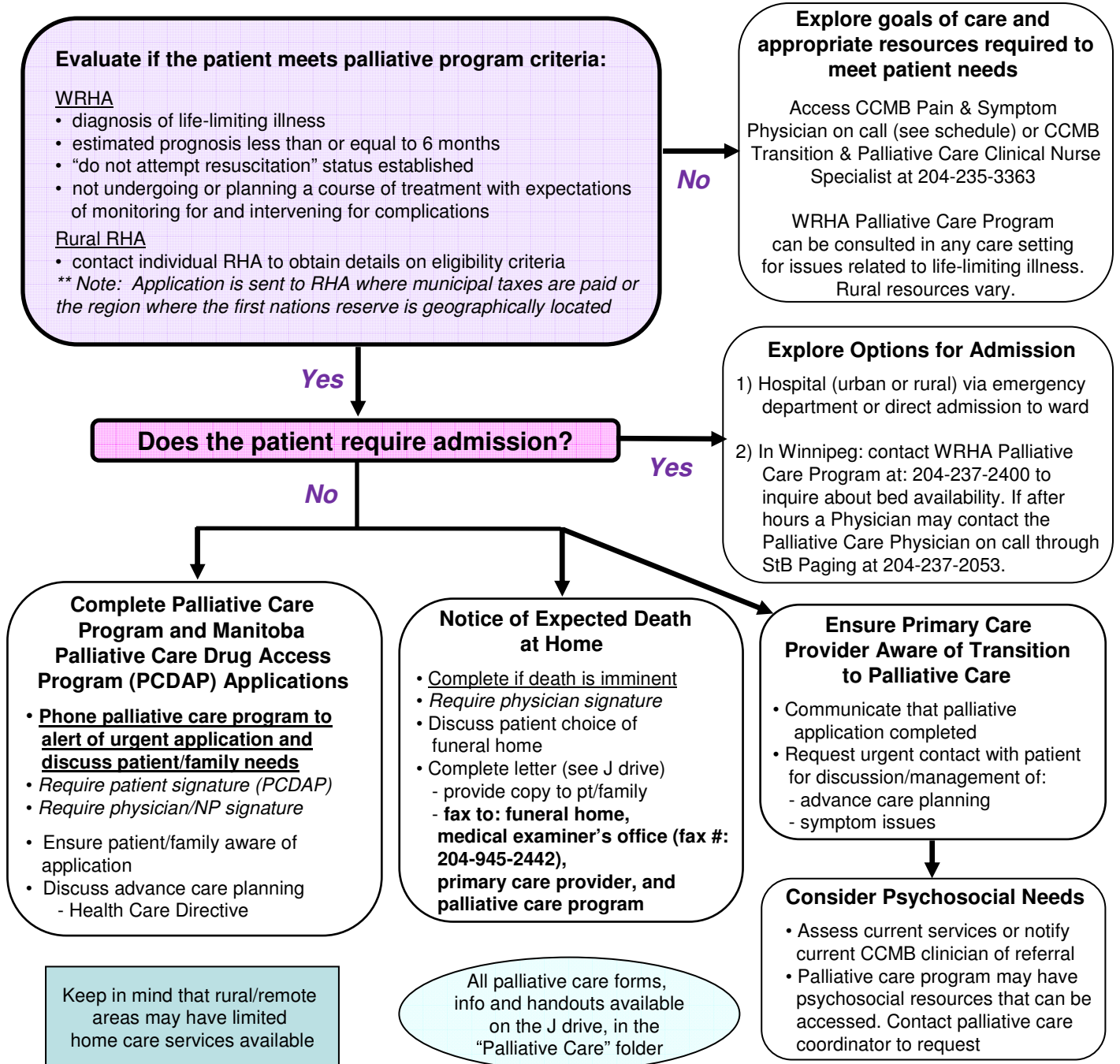


# **URGENT Palliative Care Program** Application for Registration Process



*Urgent* = patient requires immediate attention, urgent symptom management, home care services or admission to hospital



**First Nations, Métis and Inuit Cancer Control** can be accessed at: 1-855-881-4395.

**Palliative Care Program Information**  
If questions, call the palliative care program directly. WRHA palliative care program inquiries can be directed to 204-237-2400. Rural contact info varies.

**CCMB Resources Contact Information**  
If questions, call CCMB CNS -Transition & Palliative Care at: Tel. 204-235-3363 Pager 204-931-3061 or the CCMB Pain & Symptom Physician on call

*An algorithm for non-urgent palliative care application process is also available*